

Dear Friends and Customers,

We would like to welcome you to our Annual Private Treaty Bull Sale. **We will be selling 16 top quality yearling and 4 two-year-olds starting on Monday, February 19.** The silent bidding will open at **1:00** and close at **2:00 P.M.**, so feel free to come early and look through the bulls.

We have a really great set of bulls to sell this year. Quite a few of these bulls would work on heifers and young cows. There are also a number of bigger framed high-performance bulls here too. The calves weaned off a little lighter this year due to the drought, but they quickly made up for it by posting the biggest gains that I have had with bulls on test while not doing anything different feeding wise.

Our breeding philosophy is a balanced trait approach, no extremes. The purebred Charolais cows run alongside my commercial Angus/Baldy cows. They don't get any special treatment. The cows are expected to graze at least into January, sometimes longer. By managing the herd this way, we are weeding out the inferior and inefficient genetics. We have been using Charolais bulls on our commercial heifers for the last few years and have had great results. This year every Charolais-sired calf out of the first calf heifers was big enough to make the loads when I shipped feeder calves this fall.

If you are interested in purchasing a bull but are unable to attend on the opening day, you can look through the bulls beforehand and make your selections. If you are unable to attend at all, we can help you pick out a bull over the phone and we **guarantee satisfaction** on your purchase.

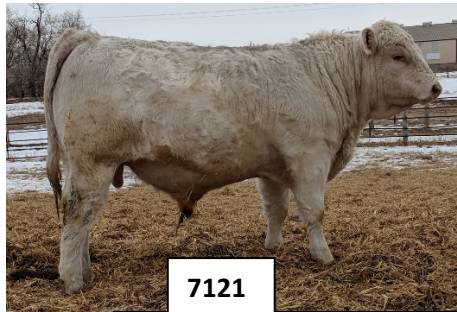
Also, we will **deliver for free up to 350 miles** with purchases of \$3000 or more. We also are offering a \$100 per bull discount if you choose to take your bull home right away, or a \$50 per bull discount if we can deliver right away. **We will feed your bulls free of charge until April 1st.** All bulls are guaranteed breeders.

Included is a listing of the bulls for sale and their performance data. Additional data and prices will be available prior to sale day. We invite you to look through our cattle anytime that you are in the area. If you have any questions or need additional information, feel free to contact us. We appreciate your past business and look forward to visiting with you.

Loren, Sara, & Ava Bock Cell: 701-290-5143

E-Mail: loren@bockranch.com

Directions to the Ranch: From Fryburg exit on I-94, 2.5 miles south to 38th St, ½ mile west to 136th Av, 2 miles south to 40th St, 1.5 miles west, and ½ mile south



LNB Impressive X071

EPDs - CE:-2.2 BW:4.4 WW:37 YW:67

8 Sons Sell

-Performance Sire

-EPDs rank top 25% for Weaning Wt & Yearling Wt

-Always sires some of the top performing bulls with a little extra frame



LNB Ledger 3025

EPDs - CE:15.3 BW:-5.6 WW:30 YW:61

7 Sons Sell

-Calving Ease & Great Performance

-Ranks in Top 2% of Breed for Calving Ease and Birth Weight

-BW Trait Leader, Biggest spread of BW to WW epd of trait leaders

-Complete Herd Sire – has very good carcass traits

Yearling Bulls

ID	Dam	Sire	Maternal Grandsire	Birth date	BW	205 WW	WW Index	1/25 Wt	ADG	WDA	EPDs: CE	BW	WW	YW	Milk	\$ TSI
7005	5079	LNB BIG BEN 5013	LT LEDGER 0332 P	3/19/17	79	717	107	1100	4.6	3.5	12.7	-4.3	27	50	4.6	\$ 203
7016	Z158	LNB IMPRESSIVE X071	LNB GRIDMAKER W100	3/23/17	100	658	98	1130	4.8	3.7	2.6	1.7	27	44	8.7	\$ 188
7019	5038	LNB BIG BEN 5013	M6 GRID MAKER 104 PET	3/24/17	100	761	113	1210	5.4	3.9	5.8	-0.3	42	75	6.5	\$ 222
7030	5048	LNB BIG BEN 5013	M6 GRID MAKER 104 PET	3/27/17	90	669	99	1025	4.5	3.4	8.4	-2	31	55	7.0	\$ 205
7041	3046	LNB IMPRESSIVE X071	LT LEDGER 0332 P	3/28/17	80	746	NA*	1145	4.3	3.8	3.4	0.9	31	60	8.1	\$ 207
7061	X109	LNB IMPRESSIVE X071	JDF TROUBADOUR 817ET TW	3/30/17	95	693	103	1125	4.5	3.7	5.3	0.4	30	50	6.8	\$ 196
7105	W057	LNB IMPRESSIVE X071	RCB GAIN & GRADE S036	4/4/17	105	692	103	1160	5.0	3.9	2.6	1.7	37	69	3.9	\$ 213
7121	Z047	LNB LEDGER 3025	LNB IMPRESSIVE X071	4/5/17	95	684	102	1120	4.8	3.8	10.4	-2.4	30	56	7.0	\$ 208
7128	Y046	LNB IMPRESSIVE X071	RCB EASE L003	4/6/17	105	712	106	1115	4.4	3.8	3.8	1.3	30	47	10.2	\$ 188
7132	4059	LNB LEDGER 3025	HC WESTPORT 1102Y PLD	4/6/17	85	747	111	1095	4.3	3.7	12.8	-3.5	35	62	7.7	\$ 212
7161	X075	LNB IMPRESSIVE X071	RCB GAIN & GRADE S036	4/8/17	105	716	106	1155	4.8	4.0	-0.1	2.8	36	56	8.3	\$ 197
7169	5009	LNB LEDGER 3025	WC BIG BEN 9036 P	4/8/17	90	667	99	1010	4.6	3.5	14	-4.5	29	55	5.7	\$ 208
7172	3071	LNB IMPRESSIVE X071	HC WESTPORT 1102Y PLD	4/9/17	90	665	99	1105	5.0	3.8	8.3	-0.9	31	53	6.3	\$ 198
7193	Y203	LNB LEDGER 3025	LNB WIND POWER U061	4/11/17	94	733	NA**	1145	4.6	4.0	0.6	2.3	37	61	10.9	\$ 204
7215	4210	LNB LEDGER 3025	LNB IMPRESSIVE X071	4/14/17	92	720	107	1080	4.6	3.8	10.9	-2.3	31	56	10.0	\$ 207
7264	3006	LNB IMPRESSIVE X071	LT LEDGER 0332 P	4/22/17	103	691	103	1045	4.5	3.8	5.1	0.7	34	62	6.6	\$ 208

Ave: 94 704 104 1110 4.7 3.7 6.7 -0.5 32 57 7.4 \$ 204

Notes: 7105 is Dehorned

*7041 is a twin so was not ratioed with others

**7193 is a twin so was not ratioed with others

Breed Average: 5.1 0.3 29 53 8.9 \$ 199

These bulls were weaned on Oct 26. They are being fed Payback Bull Challenger (a high fiber pellet designed to grow bulls, not fatten) and Grass hay. Prices, Scrotal Measurements, and Updated Weights will be available prior to sale day. Call or e-mail Loren if you would like this e-mailed to you.

2 Year Olds

ID	Dam	Sire	Maternal Grandsire	Birth date	BW	205 WW	WW Index	YW ADG	YW WDA	1/25 Wt	Ylg SC	EPDs CE	BW	WW	YW	Milk	\$TSI
6045	W009	EC Iron Man 2027 P	LT Bluegrass 4017 P	3/25/16	96	697	97	3.4	3.4	1635	35.5	5.2	-0.8	30	47	8	\$ 193
6046	Y027	LT LEDGER 0332 P	EC NO DOUBT 2022 P	3/25/16	88	754	105	3.9	3.7	1700	36.0	9.7	-1.9	29	56	4	\$ 210
6293	3181	LNB LEDGER 3025	LNB GAIN & GRADE W023	4/30/16	97	727	102	4.2	3.7	1645	37.0	8.1	-1.3	36	67	6	\$ 217
6306	4210	LNB LEDGER 3025	LNB IMPRESSIVE X071	5/4/16	92	806	113	3.9	3.7	1505	33.0	10.3	-1.8	34	60	9	\$ 209

Ave: 93 746 104 3.9 3.6 1621 35.4 8.3 -1.5 32 58 7 \$ 207